

## Commercial Parcels Off Highway 10 – Mandan ND

- Sales Price  
Starting at \$.85 psf
- Parcel Sizes  
From 1.15 – 1.52 acres
- High Visibility on West  
Main Street / Mandan ND
- Easy Access
- Zoned MA

### Contact Information:

**Kyle Holwagner**  
701.400.5373  
Kyle@DanielCompanies.com

**Bill Daniel, CCIM**  
701.220.2455  
Bill@DanielCompanies.com

**Ann Sharp**  
701.220.0261  
Ann@DanielCompanies.com

**Daniel Companies**  
304 E Rosser Ave Suite 200  
Bismarck ND 58501  
701.223.8488  
701.223.8860 fax

Broker does not guarantee the information describing this property. Interested parties are advised to independently verify the information through personal inspectors or with appropriate professionals.

**DanielCompanies.com**



The Leader In Commercial

## West of Mandan

- **Shovel ready sites**
- **Owner would consider build to suit**
- **Rural water**
- **Lots septic systems to utilize**
- **Close of Highway 6**

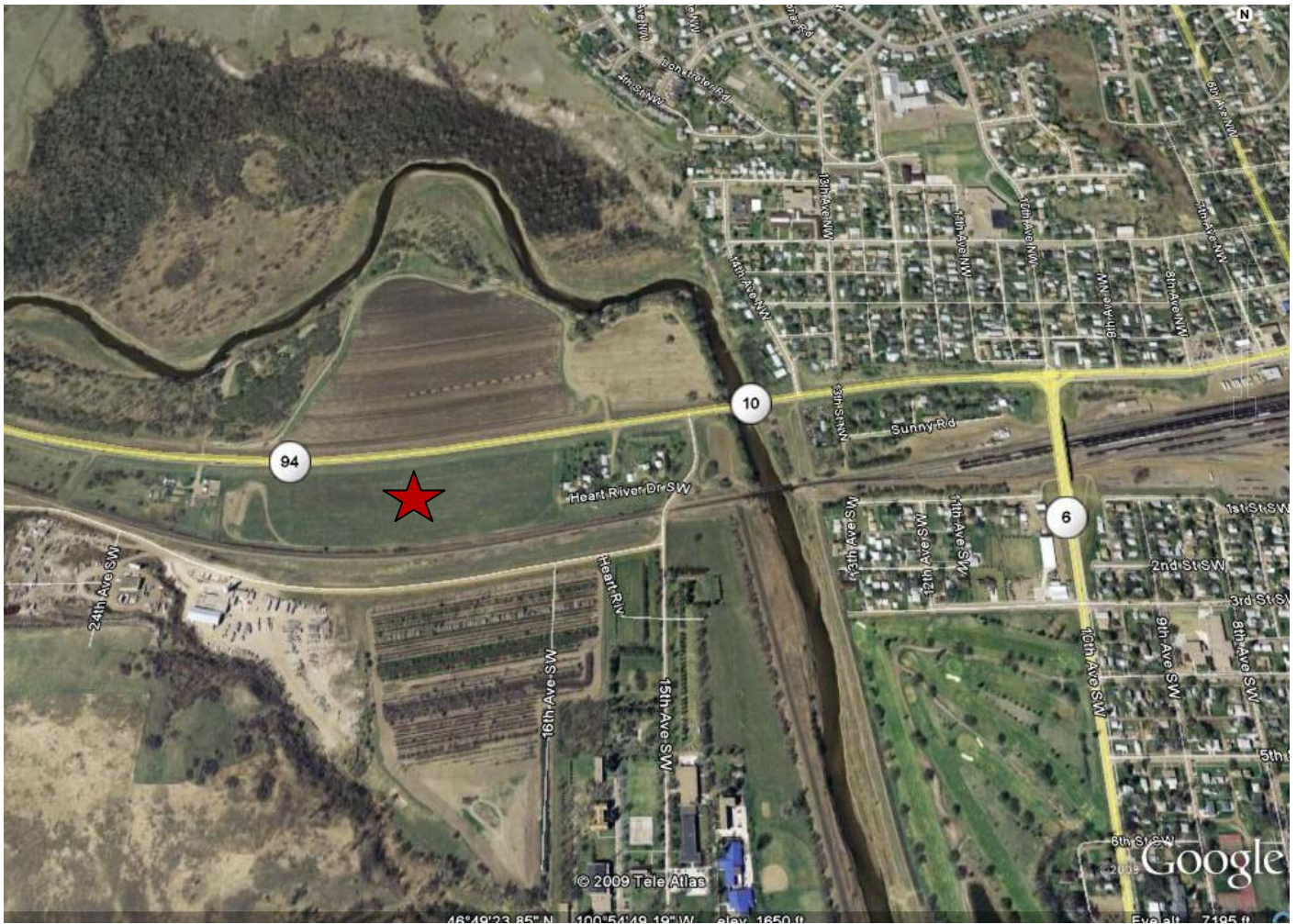
## Potential Uses

- **Warehousing**
- **Storage**
- **Shop Space**
- **Lot Storage**
- **Manufacturing**
- **Distribution Center**

Broker does not guarantee the information describing this property. Interested parties are advised to independently verify the information through personal inspectors or with appropriate professionals.



**Subject Property** ★



Broker does not guarantee the information describing this property. Interested parties are advised to independently verify the information through personal inspectors or with appropriate professionals.





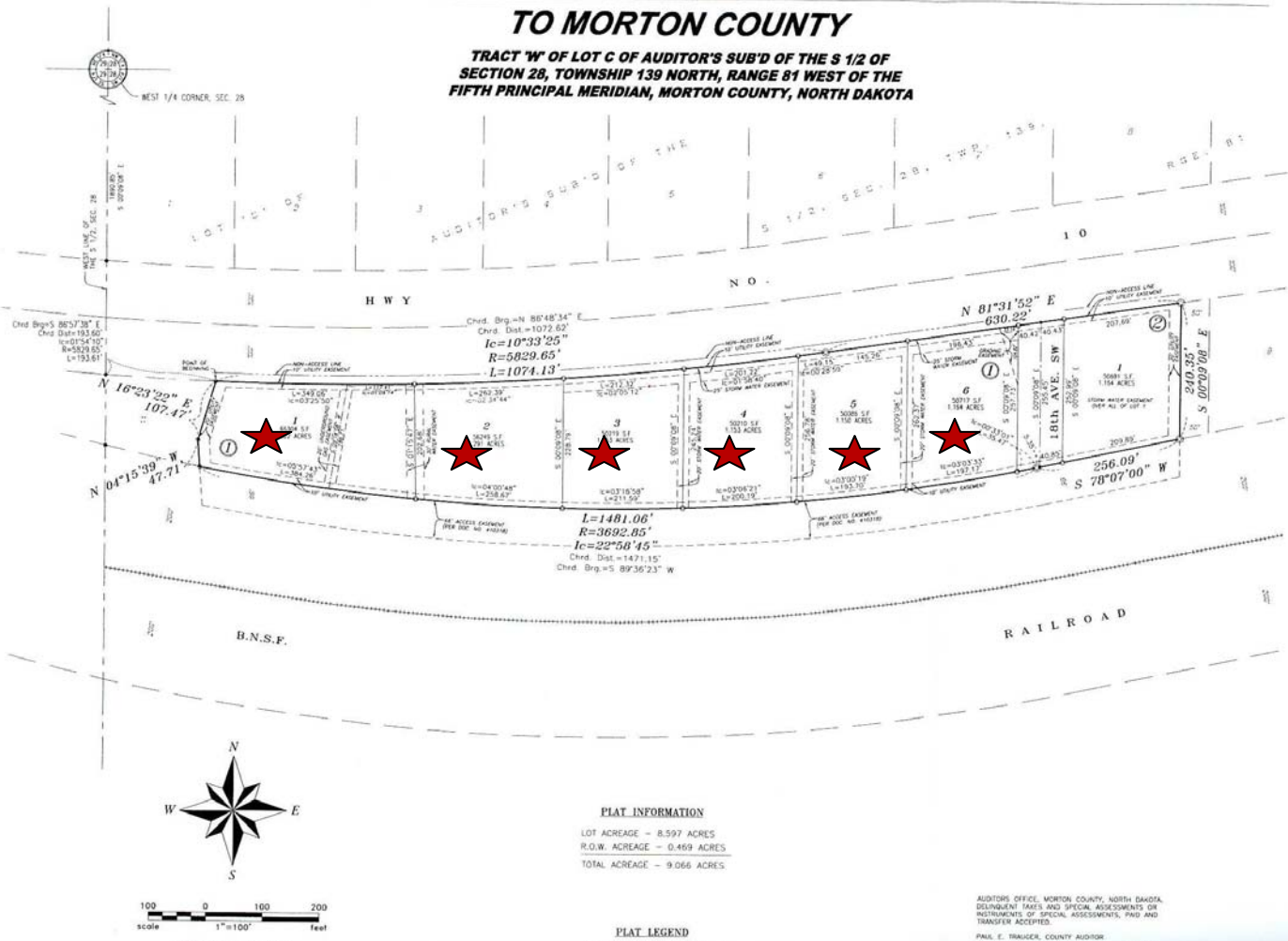
DANIEL COMPANIES

The Leader In Commercial

Available Parcels ★

# NORTH CENTRAL COMMERCIAL ADDITION TO MORTON COUNTY

TRACT 'W' OF LOT C OF AUDITOR'S SUB'D OF THE S 1/2 OF  
SECTION 28, TOWNSHIP 139 NORTH, RANGE 81 WEST OF THE  
FIFTH PRINCIPAL MERIDIAN, MORTON COUNTY, NORTH DAKOTA



Broker does not guarantee the information describing this property. Interested parties are advised to independently verify the information through personal inspectors or with appropriate professionals.

**FOR SALE**

**DANIEL COMPANIES**  
The Leader in Commercial  
701-223-8488



The Leader In Commercial

## North Central Commercial Addition Block 1

### LOT 1

- Parcel #41-0354210
- 1.52 acres
- 155.18' X 349.06' X 186.71' X 384.26'
- Taxes \$504.59
- No Specials

### LOT 4

- Parcel #41-0354240
- 1.15 acres
- 201.22' X 200.19' X 256.78' X 245.24'
- Taxes \$504.59
- No Specials

### Lot 2

- Parcel # 41-0354220
- 1.29 acres
- 262.39' X 258.67' X 228.79' X 202.68'
- Taxes \$504.59
- No Specials

### Lot 5

- Parcel #41-0354250
- 1.15 acres
- 194.41' X 193.70' X 262.37' X 256.78'
- Taxes \$504.59
- No Specials

### Lot 3

- Parcel #41-0354230
- 1.15 acres
- 212.32' X 211.59' X 245.24' X 228.79'
- Taxes \$504.59
- No Specials

### LOT 6

- Parcel #41-0354260
- 1.16 acres
- 196.43' X 197.17' X 257.73' X 262.37'
- Taxes \$504.59
- No Specials

Broker does not guarantee the information describing this property. Interested parties are advised to independently verify the information through personal inspectors or with appropriate professionals.

