

**Main Floor Office Space**  
**2400 E Broadway Av – Bismarck ND**

- Lease Rate  
**\$2,109 / mo**
- Lease Space  
**1,946 sf**
- Open Floor Plan
- Build to Suit Offices
- 3 Zones of Heating & Cooling
- ADA restrooms in bldg
- Good Access and Great Visibility

**Contact Information:**

**Kyle Holwagner, CCIM**  
701.400.5373  
Kyle@DanielCompanies.com

**Bill Daniel, CCIM**  
701.220.2455  
Bill@DanielCompanies.com

**Ann Sharp, GRI**  
701.220.0261  
Ann@DanielCompanies.com

**Daniel Companies**  
304 E Rosser Ave Suite 200  
Bismarck ND 58501  
701.223.8488  
701.223.8860 fax

**DanielCompanies.com**

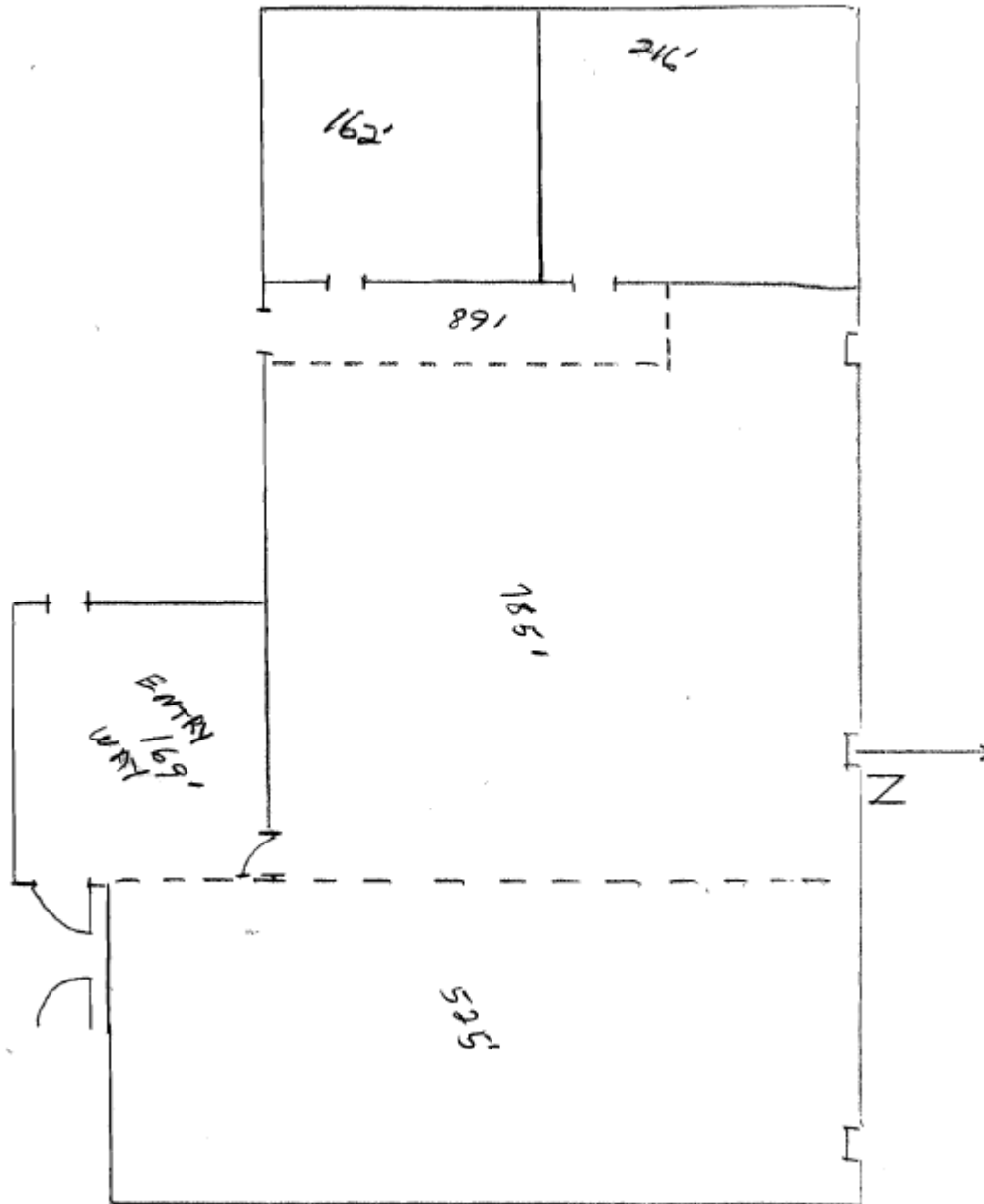
Broker does not guarantee the information describing this property. Interested parties are advised to independently verify the information through personal inspectors or with appropriate professionals.



DANIEL COMPANIES

The Leader In Commercial

2400 E Broadway Av



Dash lines indicate existing walls that are removable or entry ways cut through walls – no interior walls are load bearing. East office would be built per specs.

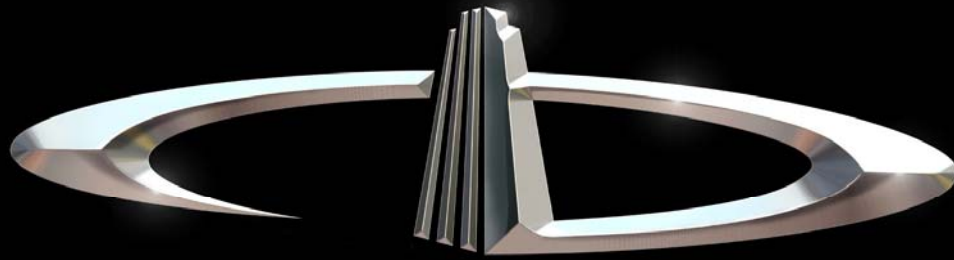




The Leader In Commercial



RETAIL • INVESTMENTS • OFFICE • INDUSTRIAL • SITE SELECTION • LEASING • BUILD TO SUIT • BROKERAGE



# DANIEL COMPANIES

The Leader in Commercial Real Estate

Serving commercial real estate customers with unmatched market knowledge, experience, and well-deserved reputation for integrity.

They know the Bismarck-Mandan commercial real estate market better than anyone. This powerful team delivers powerful results



**Bill Daniel, CCIM**  
220-0261



**Kyle Holwagner, CCIM**  
400-5373



**Ann Sharp, GRI**  
220-0261

304 E. Rosser Ave., Suite 200 Bismarck, ND 58501

Office: 701-223-8488 [DanielCompanies.com](http://DanielCompanies.com)

RETAIL • INVESTMENTS • OFFICE • INDUSTRIAL • SITE SELECTION • LEASING • BUILD TO SUIT • BROKERAGE