

DOWNTOWN OFFICE SPACE
411 N 4th St Suite '3' – Bismarck ND

- Lease Rate
\$1,200 / mo full service
less janitorial
- Lease Space
1,200 sf
- In the 'heart' of downtown
- Space consists of
 - 2 offices
 - Reception area
 - Conference room or
3rd office

Contact Information:

Kyle Holwagner, CCIM
701.400.5373
Kyle@DanielCompanies.com

Bill Daniel, CCIM
701.220.2455
Bill@DanielCompanies.com

Ann Sharp
701.220.0261
Ann@DanielCompanies.com

Daniel Companies
304 E Rosser Ave Suite 200
Bismarck ND 58501
701.223.8488
701.223.8860 fax

DanielCompanies.com

Broker does not guarantee the information describing this property. Interested parties are advised to independently verify the information through personal inspectors or with appropriate professionals.



The Leader In Commercial

In the 'Heart' of Downtown

➤ Potential Uses

- Accounting Firm
- Law Firm
- Financial Broker
- Insurance Firm
- Professional Services

➤ Area Businesses

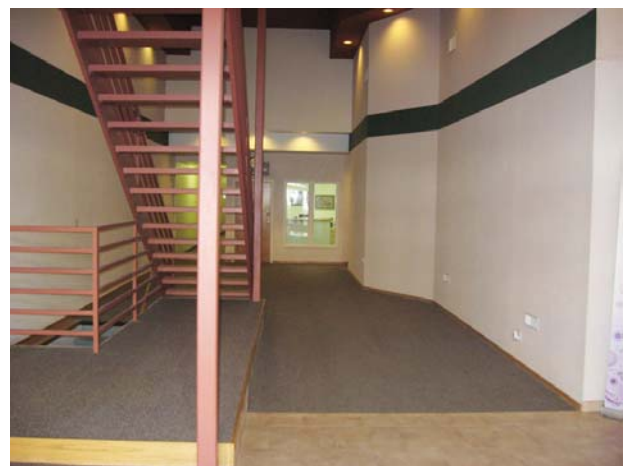
- Bridal & More
- BNC Bank
- Mathison's
- Pirogue Grille
- Toasted Frog
- Wells Fargo Bank
- Shooters Billards
- Knowles Jewelry

Broker does not guarantee the information describing this property. Interested parties are advised to independently verify the information through personal inspectors or with appropriate professionals.

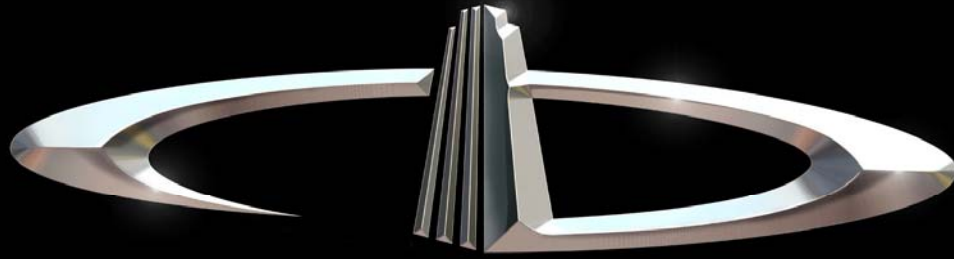




The Leader In Commercial



RETAIL • INVESTMENTS • OFFICE • INDUSTRIAL • SITE SELECTION • LEASING • BUILD TO SUIT • BROKERAGE



DANIEL COMPANIES

The Leader in Commercial Real Estate

Serving commercial real estate customers with unmatched market knowledge, experience, and well-deserved reputation for integrity.

They know the Bismarck-Mandan commercial real estate market better than anyone. This powerful team delivers powerful results



Bill Daniel, CCIM
220-0261



Kyle Holwagner, CCIM
400-5373



Ann Sharp, GRI
220-0261

304 E. Rosser Ave., Suite 200 Bismarck, ND 58501

Office: 701-223-8488 DanielCompanies.com

RETAIL • INVESTMENTS • OFFICE • INDUSTRIAL • SITE SELECTION • LEASING • BUILD TO SUIT • BROKERAGE