

Distribution / Warehouse Center 1401 E Main Av – Bismarck ND

- Sales Price
\$550,000
- Building Size
16,756 sf
- Lot Size
33,824 sf
- Zoned MA
- Built in 1952
- Taxes: \$6,409
- No Special Assessments
- High Visibility Easy Access
- \$75,000 Cash Allowance
Roof Replacement Or
Building Improvements

Contact Information:

Bill Daniel, CCIM
701.220.2455
Bill@DanielCompanies.com

Kyle Holwagner
701.400.5373
Kyle@DanielCompanies.com

Ann Sharp
701.220.0261
Ann@DanielCompanies.com

Daniel Companies
304 E Rosser Ave Suite 200
Bismarck ND 58501
701.223.8488
701.223.8860 fax

DanielCompanies.com

Broker does not guarantee the information describing this property. Interested parties are advised to independently verify the information through personal inspectors or with appropriate professionals.



The Leader In Commercial

Potential Uses

- Warehouse
- Distribution Center
- Light Manufacturing
- Wholesale
- Trucking / Transportation Facility
- Building Supply
- Construction Company
- Tire Store / Shop

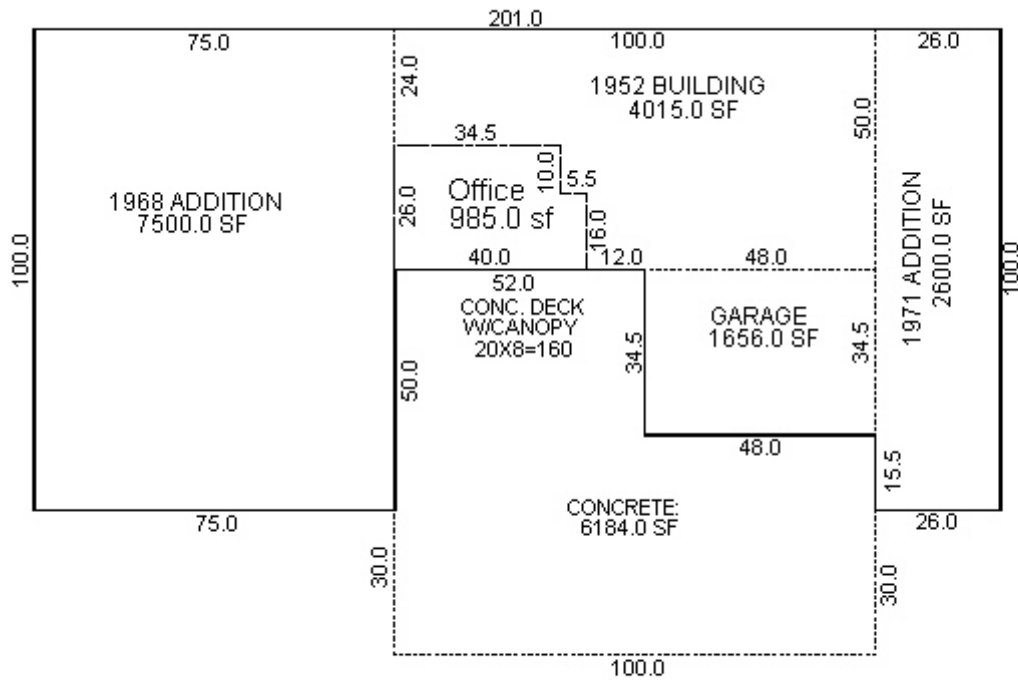
Area Businesses

- St Alexius / Prime Care Facilities
- Land O Lakes
- Farm & Home Supply
- General Trading Company
- Jim's Auto
- Lewis & Clark Animal Hospital
- KT Animal Supply
- Veracity Motors
- Napa Auto Parts
- Northern Plains Dance
- Simonson



Broker does not guarantee the information describing this property. Interested parties are advised to independently verify the information through personal inspectors or with appropriate professionals.

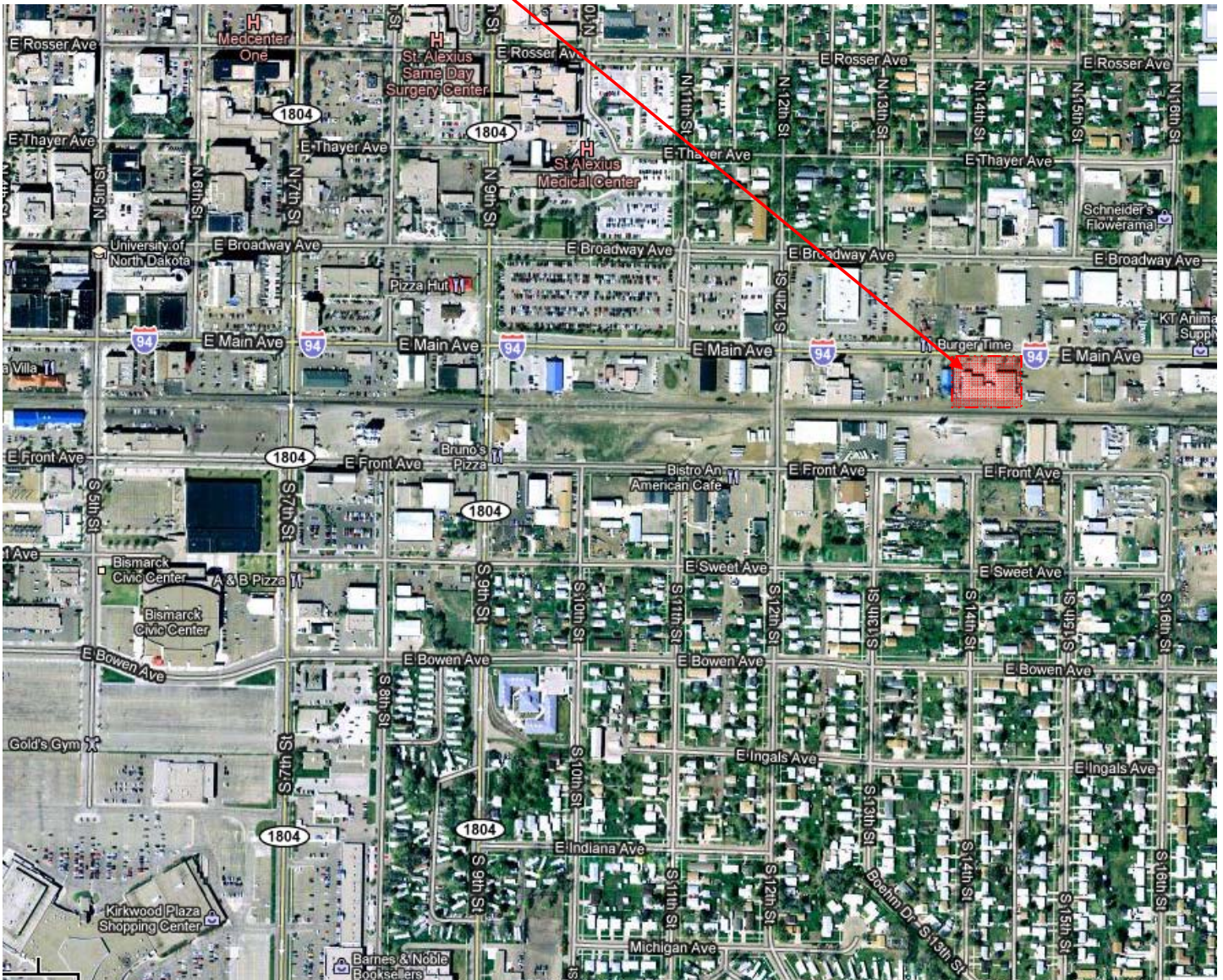
1401 E Main Av



Broker does not guarantee the information describing this property. Interested parties are advised to independently verify the information through personal inspectors or with appropriate professionals.



1401 E Main Av



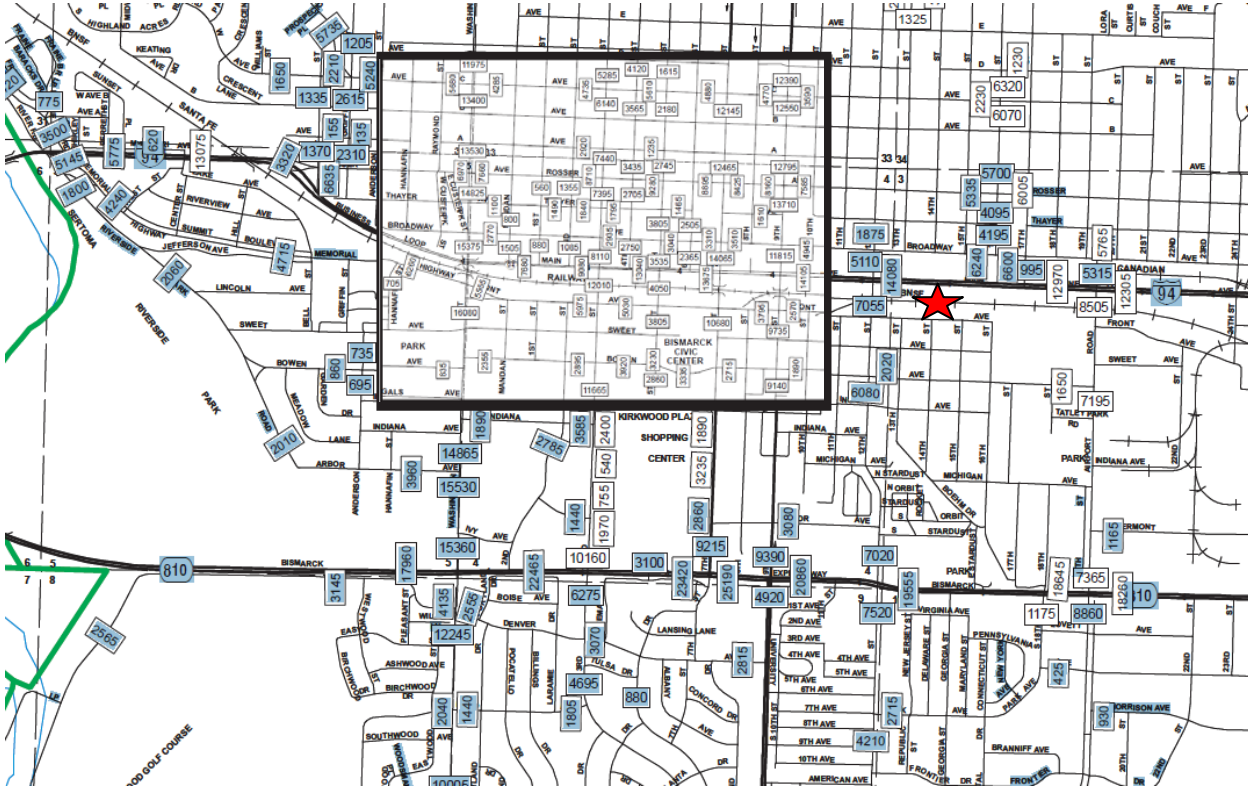
Broker does not guarantee the information describing this property. Interested parties are advised to independently verify the information through personal inspectors or with appropriate professionals.



DANIEL COMPANIES

The Leader In Commercial

Traffic Counts



Demographics

Drive Time	<u>5 Minutes</u>	<u>10 Minutes</u>	<u>15 Minutes</u>
Population	33,570	72,965	93,355
Median Income	\$ 46,359	\$ 53,143	\$ 55,214

Broker does not guarantee the information describing this property. Interested parties are advised to independently verify the information through personal inspectors or with appropriate professionals.





DANIEL COMPANIES

The Leader In Commercial

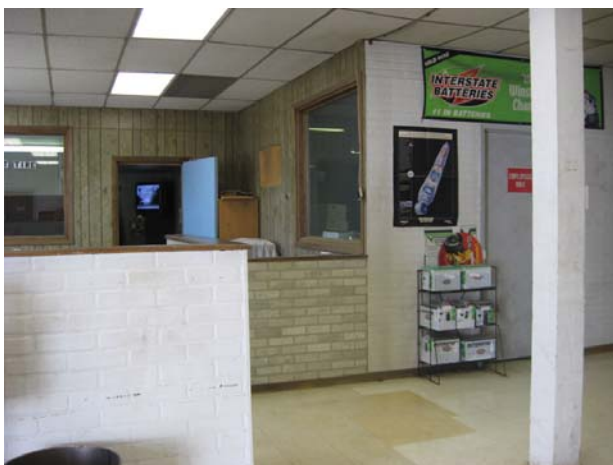


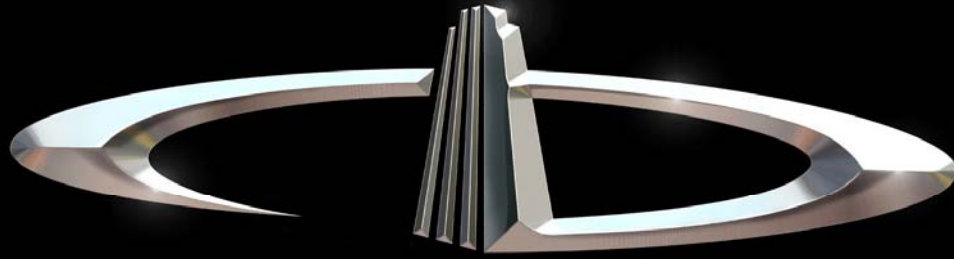
FOR SALE

DANIEL COMPANIES
The Leader In Commercial
701-223-8488



The Leader In Commercial





DANIEL COMPANIES

The Leader in Commercial Real Estate

Serving commercial real estate customers with unmatched market knowledge, experience, and well-deserved reputation for integrity.

They know the Bismarck-Mandan commercial real estate market better than anyone. This powerful team delivers powerful results



Bill Daniel, CCIM
220-2455



Kyle Holwagner
400-5373



Ann Sharp, GRI
220-0261

304 E. Rosser Ave., Suite 200 Bismarck, ND 58501

Office: 701-223-8488 DanielCompanies.com