

**MEDICAL / OFFICE / RETAIL**  
**1100 Weiss Av – Bismarck ND**

- Square Footage  
6,294 sf
- \$14 psf \$5.80 psf NNN  
\$ 7,343 base rent  
\$ 3,042 NNN  
\$10,385 per month
- 43,444 sf lot
- Great Visibility
- Easy Access
- Taxes: \$13,633
- Front Door Parking

**Contact Information:**

**Bill Daniel, CCIM**  
701.220.2455  
Bill@DanielCompanies.com

**Kyle Holwagner, CCIM**  
701.400.5373  
Kyle@DanielCompanies.com

**Ann Sharp, GRI**  
701.220.0261  
Ann@DanielCompanies.com

**Daniel Companies**  
304 E Rosser Ave Suite 200  
Bismarck ND 58501  
701.223.8488  
701.223.8860 fax

**DanielCompanies.com**

Broker does not guarantee the information describing this property. Interested parties are advised to independently verify the information through personal inspectors or with appropriate professionals.



The Leader In Commercial

## 1100 Weiss Av

- Available for long term lease – minimum 5 years
- Great opportunity to lease space in the hot North Bismarck retail corridor. Located NW of the Intersection of Century Ave & State St
- Abundant front door parking & handicap accessibility
- Great location for local and out of town customers or clients ... between I-94 & new Super Walmart – just west of State St / Highway 83
- Fantastic building & pylon signage opportunities that could be visible from State Street
  
- Area Businesses
  - Menards
  - Dan's Supermarket
  - RCC Western Wear
  - Hobby Lobby
  - Red Carpet C-Store
  - Taco Bell
  - Dan's Supermarket
  - Ruby Tuesdays
  - Red Lobster
  - K-Mart
  - Gateway Fashion Mall

Broker does not guarantee the information describing this property. Interested parties are advised to independently verify the information through personal inspectors or with appropriate professionals.





DANIEL COMPANIES

The Leader In Commercial

Site





The Leader In Commercial



**FOR SALE**

**DANIEL COMPANIES**  
The Leader in Commercial  
701-223-8488



The Leader In Commercial





**DANIEL COMPANIES**

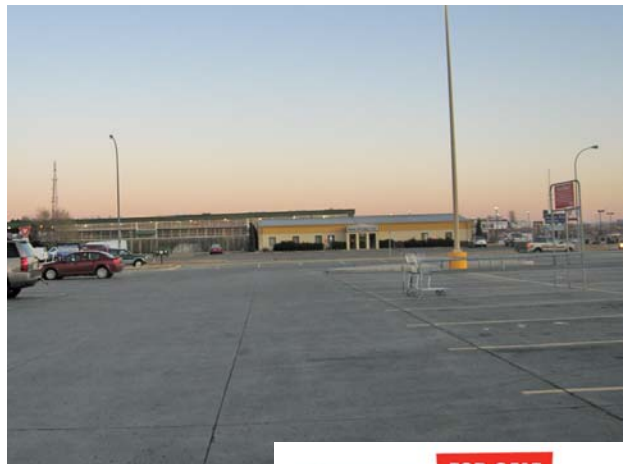
The Leader In Commercial



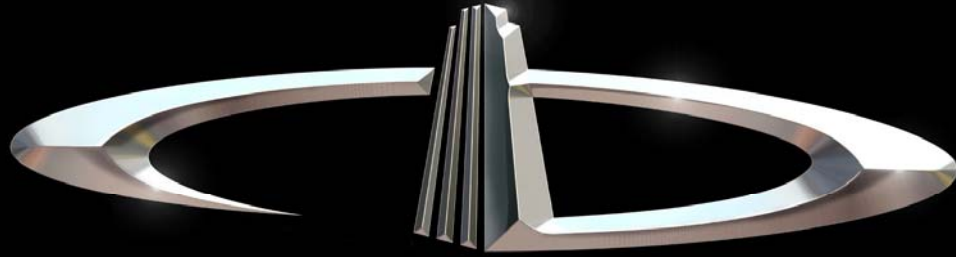
RETAIL • INVESTMENTS • OFFICE • INDUSTRIAL • SITE SELECTION • LEASING • BUILD TO SUIT • BROKERAGE



The Leader In Commercial



RETAIL • INVESTMENTS • OFFICE • INDUSTRIAL • SITE SELECTION • LEASING • BUILD TO SUIT • BROKERAGE



# DANIEL COMPANIES

The Leader in Commercial Real Estate

Serving commercial real estate customers with unmatched market knowledge, experience, and well-deserved reputation for integrity.

They know the Bismarck-Mandan commercial real estate market better than anyone. This powerful team delivers powerful results



**Bill Daniel, CCIM**  
220-2455



**Kyle Holwagner, CCIM**  
400-5373



**Ann Sharp, GRI**  
220-0261

304 E. Rosser Ave., Suite 200 Bismarck, ND 58501

Office: 701-223-8488 [DanielCompanies.com](http://DanielCompanies.com)

RETAIL • INVESTMENTS • OFFICE • INDUSTRIAL • SITE SELECTION • LEASING • BUILD TO SUIT • BROKERAGE