

Investment Property 3333 E Broadway Av – Bismarck ND

- Sales Price
\$1,750,000
- On Site Parking
- Building Size
23,005 sf / main floor
23,005 sf / lower level
- Lot Size is 57,290 sf
- Built in 1981
- Zoned MA
- Taxes: \$16,594 (2011)
- Special Assessments
Installment \$1,454
Balance \$1,375

Contact Information:

Kyle Holwagner, CCIM
701.400.5373
Kyle@DanielCompanies.com

Bill Daniel, CCIM
701.220.2455
Bill@DanielCompanies.com

Ann Sharp
701.220.0261
Ann@DanielCompanies.com

Daniel Companies
304 E Rosser Ave Suite 200
Bismarck ND 58501
701.223.8488
701.223.8860 fax

DanielCompanies.com

Broker does not guarantee the information describing this property. Interested parties are advised to independently verify the information through personal inspectors or with appropriate professionals.



The Leader In Commercial

3300 East Broadway Av

- **Potential Uses**
 - **Healthcare**
 - **Professional services**
 - **Financial offices**
 - **Accounting firm**
 - **Legal Offices**

- **Area Businesses Include**
 - **Coca Cola Bottling**
 - **Action Movers**
 - **Clear Channel**
 - **DMV RR Inc.**
 - **City Air Mechanical**
 - **Credit Collection Business**
 - **Geo Serv Inc.**
 - **Border States Electric**
 - **Amcon Distribution Co**
 - **Gibbons Fiberglass & Aluminum Boat Repair**
 - **Kadrmass, Lee & Jackson**
 - **Klemetson Woodworking Co.**
 - **Electric Systems**
 - **Superior Glass**
 - **Ben's Electric**
 - **Dakota Supply (DSG)**

Broker does not guarantee the information describing this property. Interested parties are advised to independently verify the information through personal inspectors or with appropriate professionals.





The Leader In Commercial

3300 E Broadway Av

➤ **Building Tenants**

- **Vanderscoff Enterprises**
- **Herbel Law Firm**
- **Native Ameican Training Institute**
- **Weisz & Sons, Inc.**
- **Awnings**
- **Prairie Insurance**
- **Germolus Law Office**
- **Knoll Law Office**
- **Merlin Promotions**
- **Dakota Credit**
- **Gateway Community Fellowship**
- **Credit Patch**
- **ND Public Employees Assn**
- **Direct TV**
- **Bankers Equipment Services Inc.**
- **Plunketts Pest Control**
- **Prairie Select/Books Are Fun**
- **Holly Beck Engineering**
- **Interior by France**

Broker does not guarantee the information describing this property. Interested parties are advised to independently verify the information through personal inspectors or with appropriate professionals.

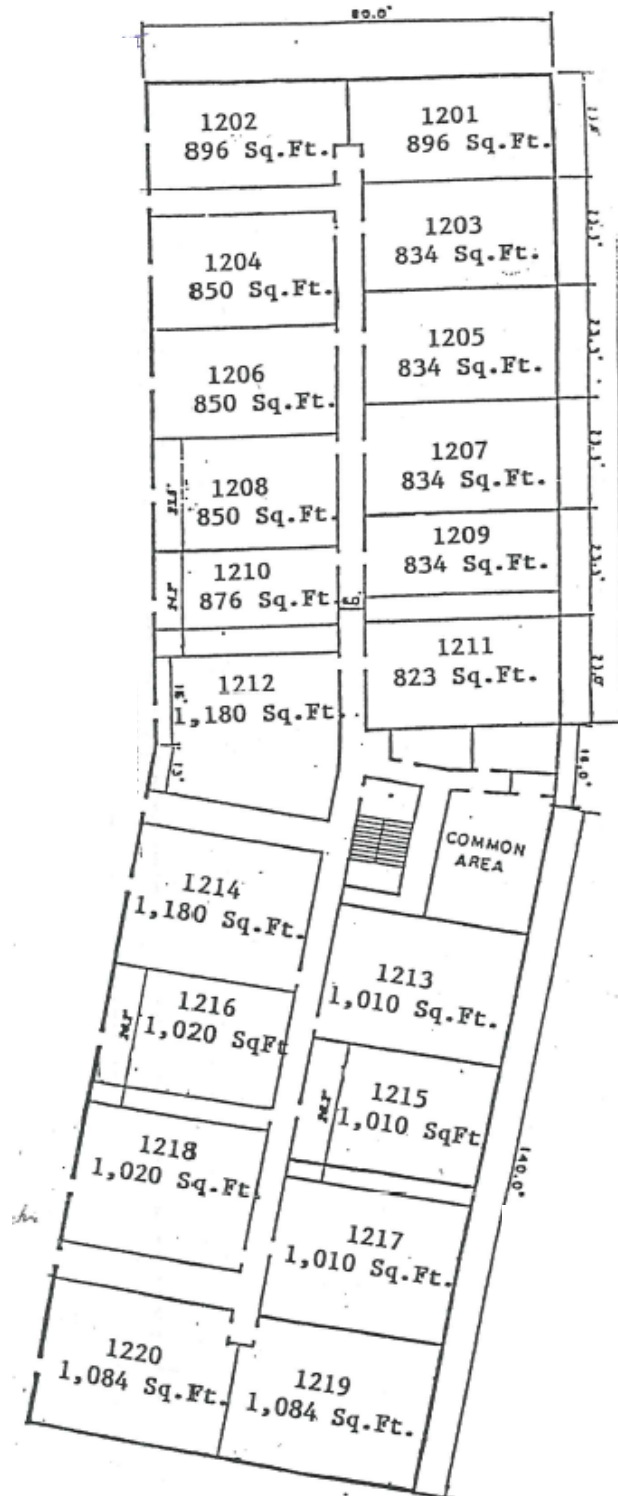




DANIEL COMPANIES

The Leader In Commercial

Upper Level

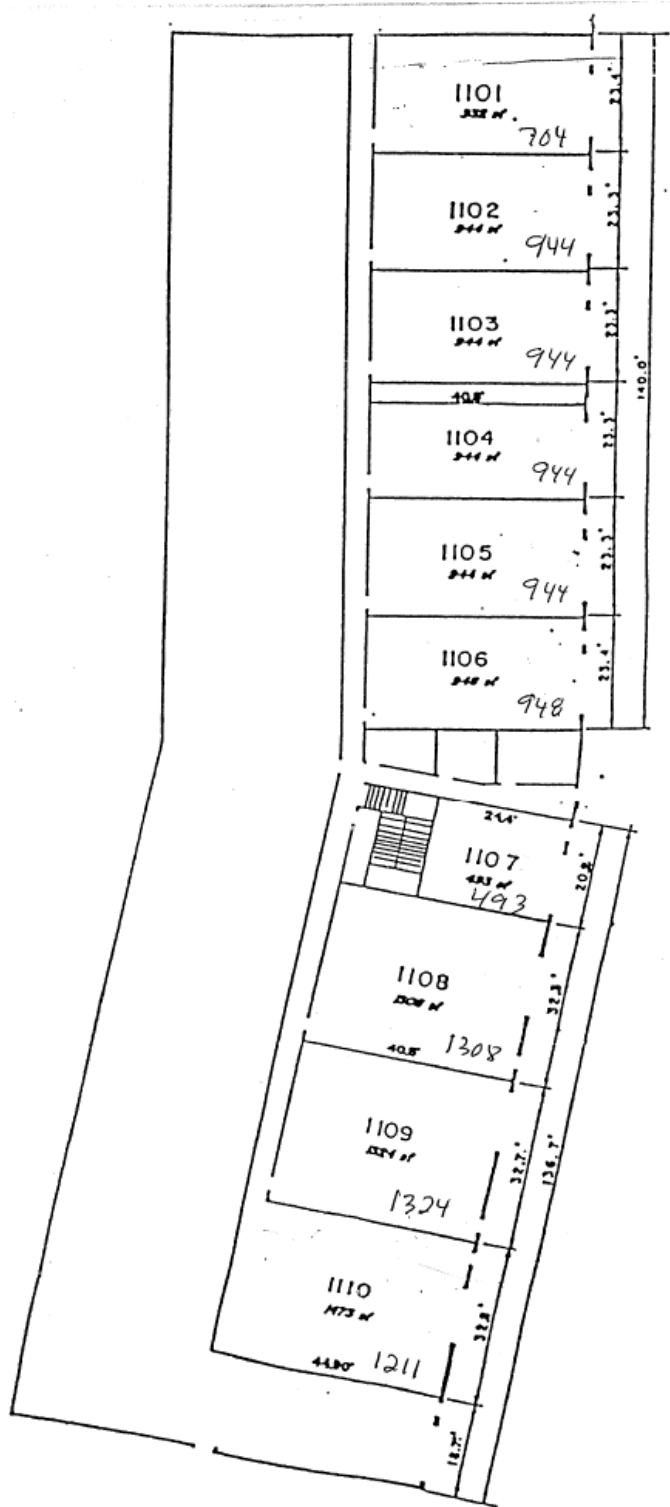




DANIEL COMPANIES

The Leader In Commercial

Lower Level





The Leader In Commercial



RETAIL • INVESTMENTS • OFFICE • INDUSTRIAL • SITE SELECTION • LEASING • BUILD TO SUIT • BROKERAGE



DANIEL COMPANIES

The Leader In Commercial



RETAIL • INVESTMENTS • OFFICE • INDUSTRIAL • SITE SELECTION • LEASING • BUILD TO SUIT • BROKERAGE



The Leader In Commercial





The Leader In Commercial





The Leader In Commercial

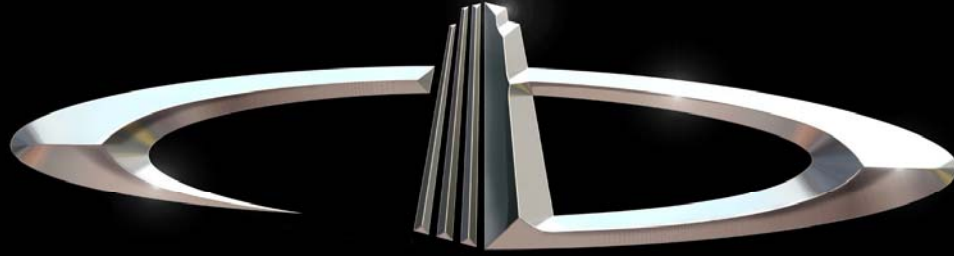


RETAIL • INVESTMENTS • OFFICE • INDUSTRIAL • SITE SELECTION • LEASING • BUILD TO SUIT • BROKERAGE



The Leader In Commercial





DANIEL COMPANIES

The Leader in Commercial Real Estate

Serving commercial real estate customers with unmatched market knowledge, experience, and well-deserved reputation for integrity.

They know the Bismarck-Mandan commercial real estate market better than anyone. This powerful team delivers powerful results



Bill Daniel, CCIM
220-2455



Kyle Holwagner, CCIM
400-5373



Ann Sharp, GRI
220-0261

304 E. Rosser Ave., Suite 200 Bismarck, ND 58501

Office: 701-223-8488 DanielCompanies.com

RETAIL • INVESTMENTS • OFFICE • INDUSTRIAL • SITE SELECTION • LEASING • BUILD TO SUIT • BROKERAGE