

Shop / Office Building
2905 & 2909 Twin City Dr – Mandan ND

- Sale Price
\$900,000
- 18,000 sf building
- 52,000 sf lot
- Built in 1980
- Zoned MC Light Industrial
- Taxes \$4,665
- Special Assessments
Install \$136
Balance \$784

Contact Information:

Kyle Holwagner, ccim
701.400.5373
Kyle@DanielCompanies.com

Bill Daniel, CCIM
701.220.2455
Bill@DanielCompanies.com

Ann Sharp, GRI
701.220.0261
Ann@DanielCompanies.com

Daniel Companies
304 E Rosser Ave Suite 200
Bismarck ND 58501
701.223.8488
701.223.8860 fax

DanielCompanies.com

Broker does not guarantee the information describing this property. Interested parties are advised to independently verify the information through personal inspectors or with appropriate professionals.



The Leader In Commercial

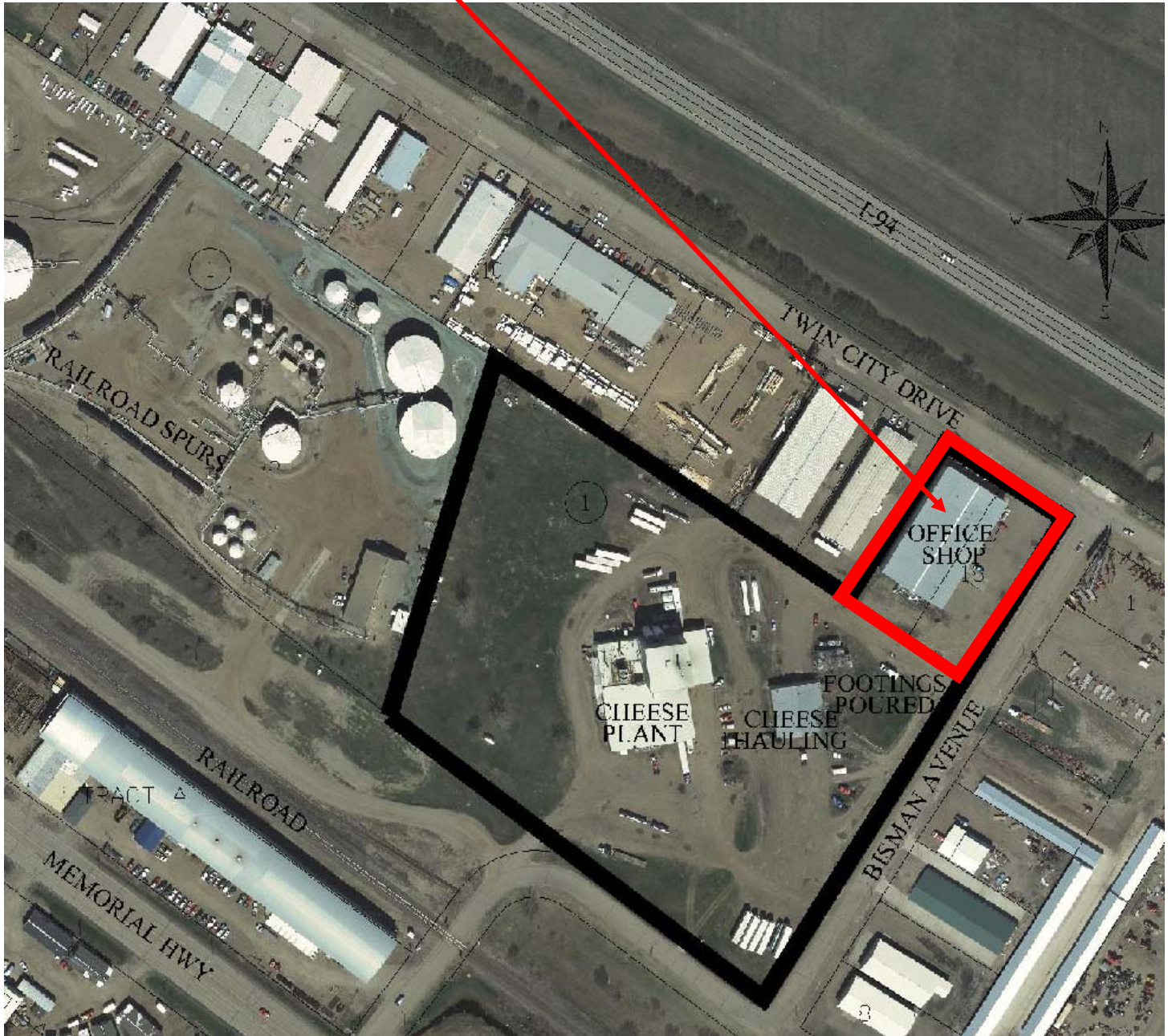
2905 & 2909 Twin City Dr

- **Potential Uses**
 - Warehouse
 - Shop
 - Light Manufacturing
 - Storage
 - Distribution
- **Area Businesses Include**
 - Ditch Witch
 - Case IH
 - CJ Rigging
 - Leingang Siding & Windows
 - McDonalds
 - Mandan Steel
 - Cenex Agronomy
- **Great Access to**
 - Interstate 94
 - Memorial Highway
 - Bismarck Main Street
 - Mandan Main Street
- **One dock height door**
- **5 overhead doors**
- **Lots 17 & 18, Block 1 Twin City Industrial Sites 1st**
- **Parcel #65-5280000**

Broker does not guarantee the information describing this property. Interested parties are advised to independently verify the information through personal inspectors or with appropriate professionals.



2905 & 2909 Twin City Dr





DANIEL COMPANIES

The Leader In Commercial





The Leader In Commercial



RETAIL • INVESTMENTS • OFFICE • INDUSTRIAL • SITE SELECTION • LEASING • BUILD TO SUIT • BROKERAGE



DANIEL COMPANIES

The Leader In Commercial

2905 & 2909 Twin City Dr

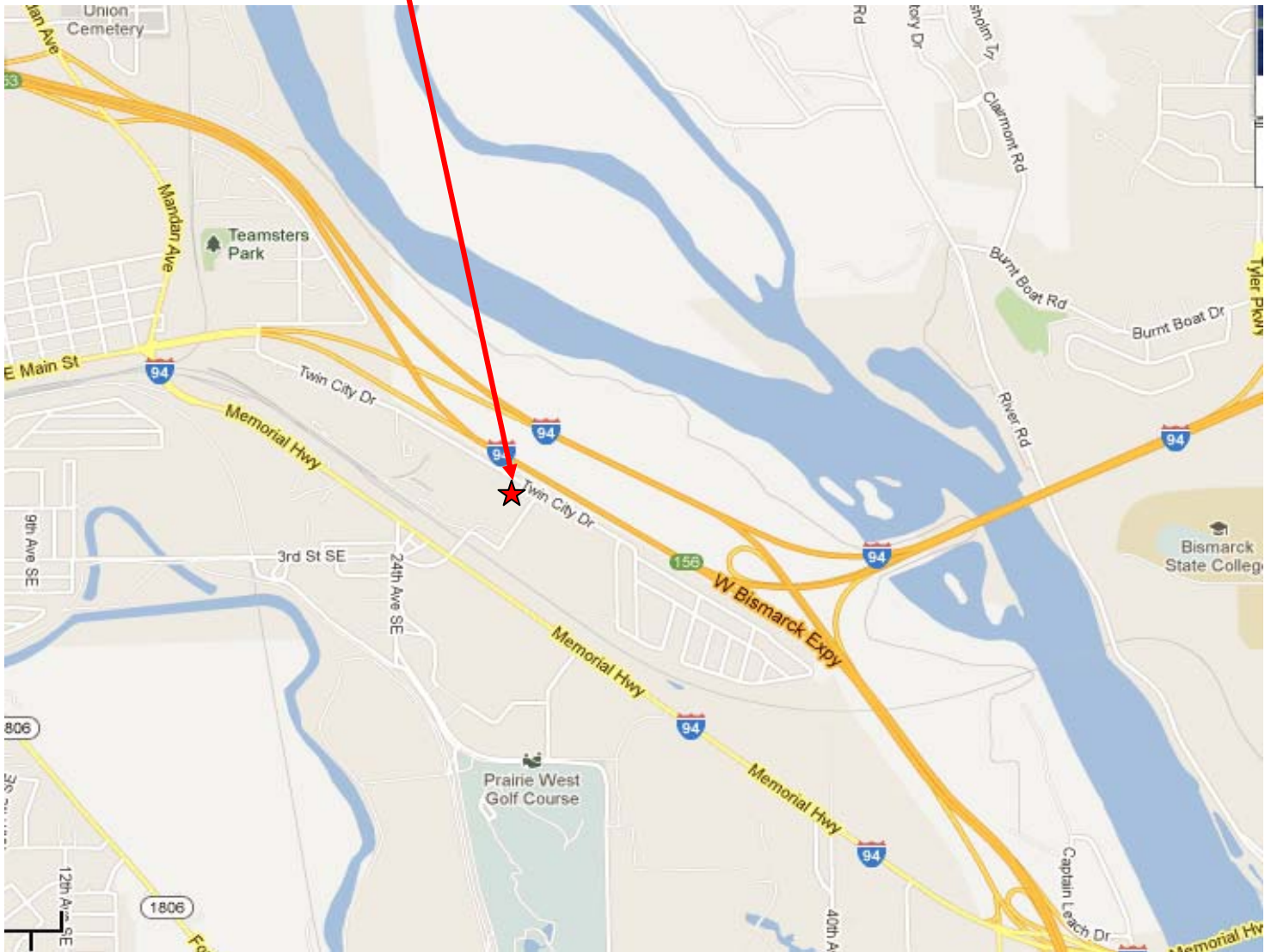


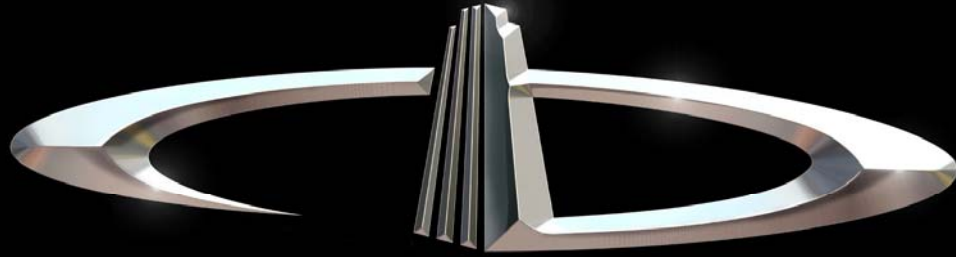


DANIEL COMPANIES

The Leader In Commercial

2905 & 2909 Twin City Dr





DANIEL COMPANIES

The Leader in Commercial Real Estate

Serving commercial real estate customers with unmatched market knowledge, experience, and well-deserved reputation for integrity.

They know the Bismarck-Mandan commercial real estate market better than anyone. This powerful team delivers powerful results



Bill Daniel, CCIM
220-2455



Kyle Holwagner, CCIM
400-5373



Ann Sharp, GRI
220-0261

304 E. Rosser Ave., Suite 200 Bismarck, ND 58501

Office: 701-223-8488 DanielCompanies.com

RETAIL • INVESTMENTS • OFFICE • INDUSTRIAL • SITE SELECTION • LEASING • BUILD TO SUIT • BROKERAGE