

## Fantastic Southport Lot 1505 Galleon Place – Bismarck ND

Broker does not guarantee the information describing this property. Interested parties are advised to independently verify the information through personal inspectors or with appropriate professionals.

- Sale Price  
\$189,000
- Lot Size  
22,151 sf
  - . 55' water frontage
  - . 110' on Riverwood Dr
  - . 130' on Galleon Pl
- SW exposure on water frontage
- Low traffic cul-de-sac
- Taxes: \$1,275 ('09)
- Special Assessments  
Install: \$1,178 ('09)  
Balance: \$2,250 ('09)

### Contact Information:

**Bill Daniel, CCIM**  
701.220.2455  
Bill@DanielCompanies.com

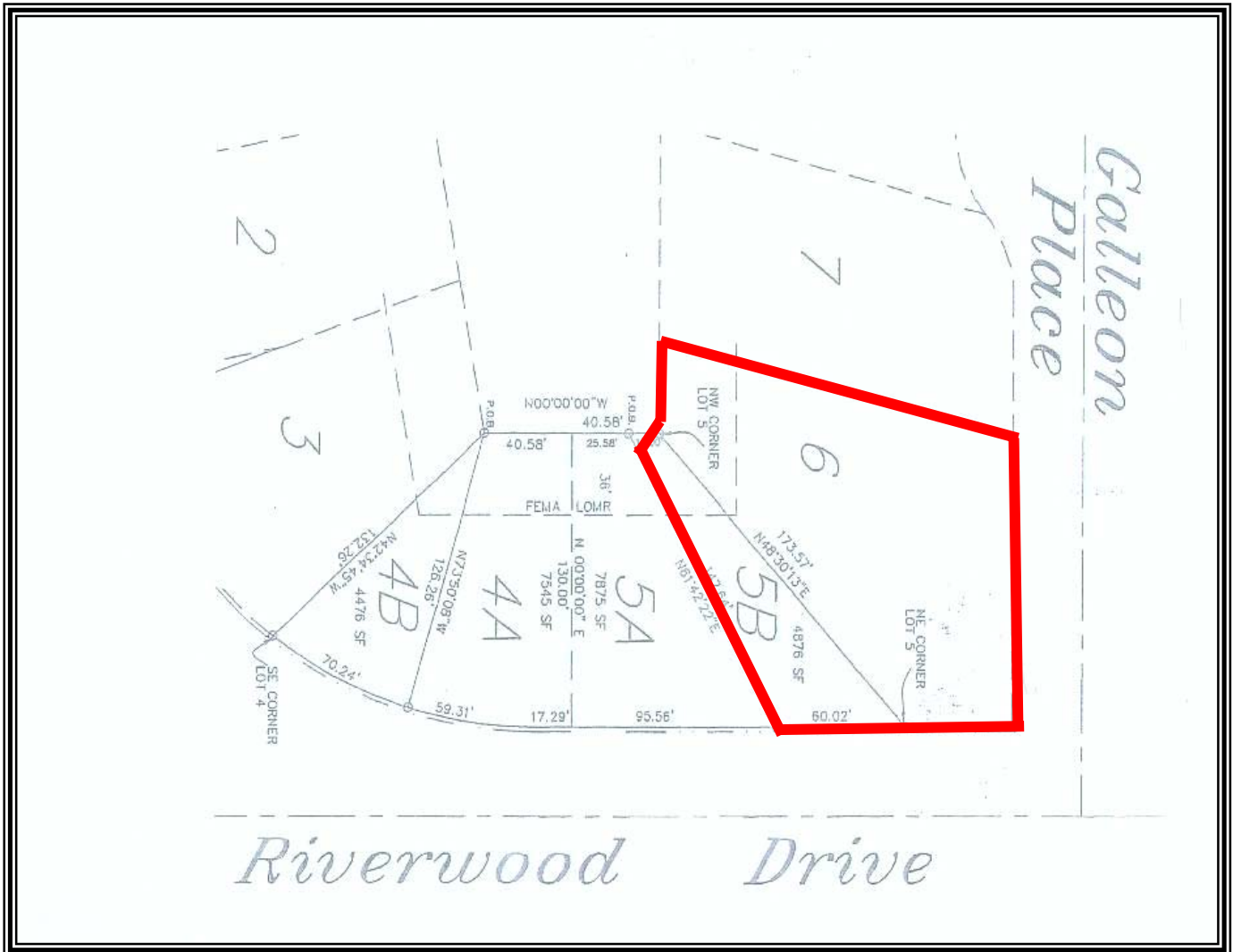
**Kyle Holwagner**  
701.400.5373  
Kyle@DanielCompanies.com

**Ann Sharp**  
701.220.0261  
Ann@DanielCompanies.com

**Daniel Companies**  
304 E Rosser Ave Suite 200  
Bismarck ND 58501  
701.223.8488  
701.223.8860 fax

**DanielCompanies.com**

**1505 Galleon Place**



Broker does not guarantee the information describing this property. Interested parties are advised to independently verify the information through personal inspectors or with appropriate professionals.







DANIEL COMPANIES

DanielCompanies.com

1505 Galleon Place 

