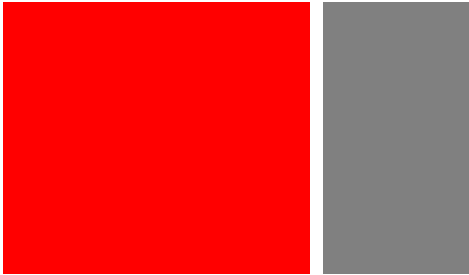


**COMMERCIAL BUILDING**  
**4500 Carbine Dr– Bismarck ND**



- Sales Price \$ 350,000
- Lease price TBD  
Based on build-outs
- 5,000 SF Building 50 x 100
- 1.44 Acre Lot
- 16' Sidewalls
- 2 ... 14 X 14 Doors  
- 1 ... 10 X 14' Door
- Taxes TBD
- No Special Assessments

**Contact Information:**

**Kyle Holwagner, CCIM**  
701.400.5373  
Kyle@DanielCompanies.com

**Bill Daniel, CCIM**  
701.220.2455  
Bill@DanielCompanies.com

**Ann Sharp**  
701.220.0261  
Ann@DanielCompanies.com

**Daniel Companies**  
304 E Rosser Ave Suite 200  
Bismarck ND 58501  
701.223.8488  
701.223.8860 fax

Broker does not guarantee the information describing this property. Interested parties are advised to independently verify the information through personal inspectors or with appropriate professionals.

**DanielCompanies.com**



The Leader In Commercial

## South Bismarck Location

- **Mariner Construction**
- **Northern Coatings**
- **Magnum Trucking**
- **Federal Express**
- **Heartland Grain Elevator**

## Potential Uses

- **Manufacturing Facility**
- **Wholesale**
- **Distribution**
- **Transportation Cross docks**
- **Storage Units**
- **Agriculture & energy Related Businesses**
- **Industrial & Commercial Uses**

Broker does not guarantee the information describing this property. Interested parties are advised to independently verify the information through personal inspectors or with appropriate professionals.

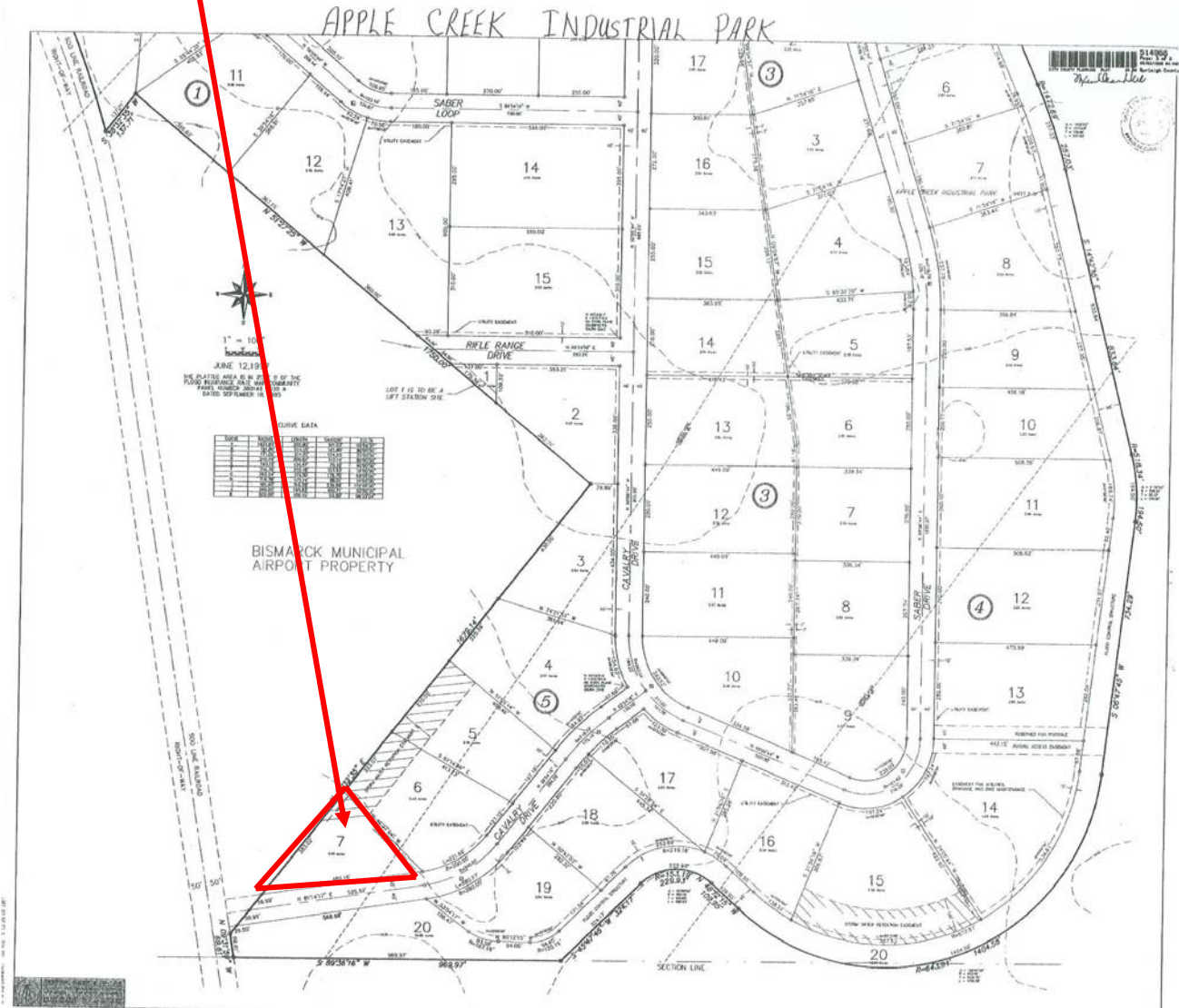




DANIEL COMPANIES

The Leader In Commercial

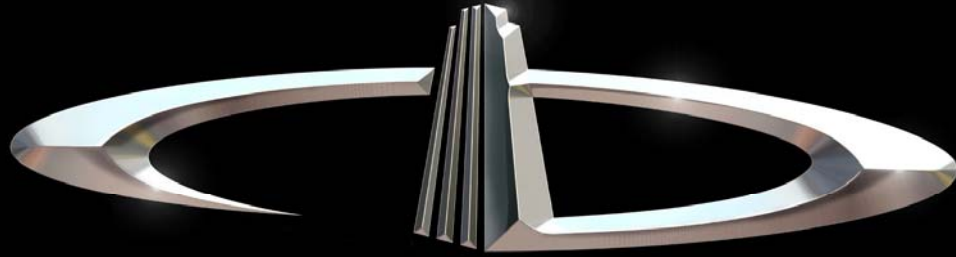
Site



**FOR SALE**

DANIEL COMPANIES  
The Leader in Commercial  
701-223-8488

Broker does not guarantee the information describing this property. Interested parties are advised to independently verify the information through personal inspectors or with appropriate professionals.



# DANIEL COMPANIES

The Leader in Commercial Real Estate

Serving commercial real estate customers with unmatched market knowledge, experience, and well-deserved reputation for integrity.

They know the Bismarck-Mandan commercial real estate market better than anyone. This powerful team delivers powerful results



**Bill Daniel, CCIM**  
220-2455



**Kyle Holwagner, CCIM**  
400-5373



**Ann Sharp, GRI**  
220-0261

304 E. Rosser Ave., Suite 200 Bismarck, ND 58501

Office: 701-223-8488 [DanielCompanies.com](http://DanielCompanies.com)

RETAIL • INVESTMENTS • OFFICE • INDUSTRIAL • SITE SELECTION • LEASING • BUILD TO SUIT • BROKERAGE